

Triton Museum of Art

Gallery Dimensions and Max Capacities

John & Eve Mathias

Seated: 120-135, mingling: 250

Permanent

Seated: 90, mingling: 200

Rotunda

Seated: 120, Mingling: 200

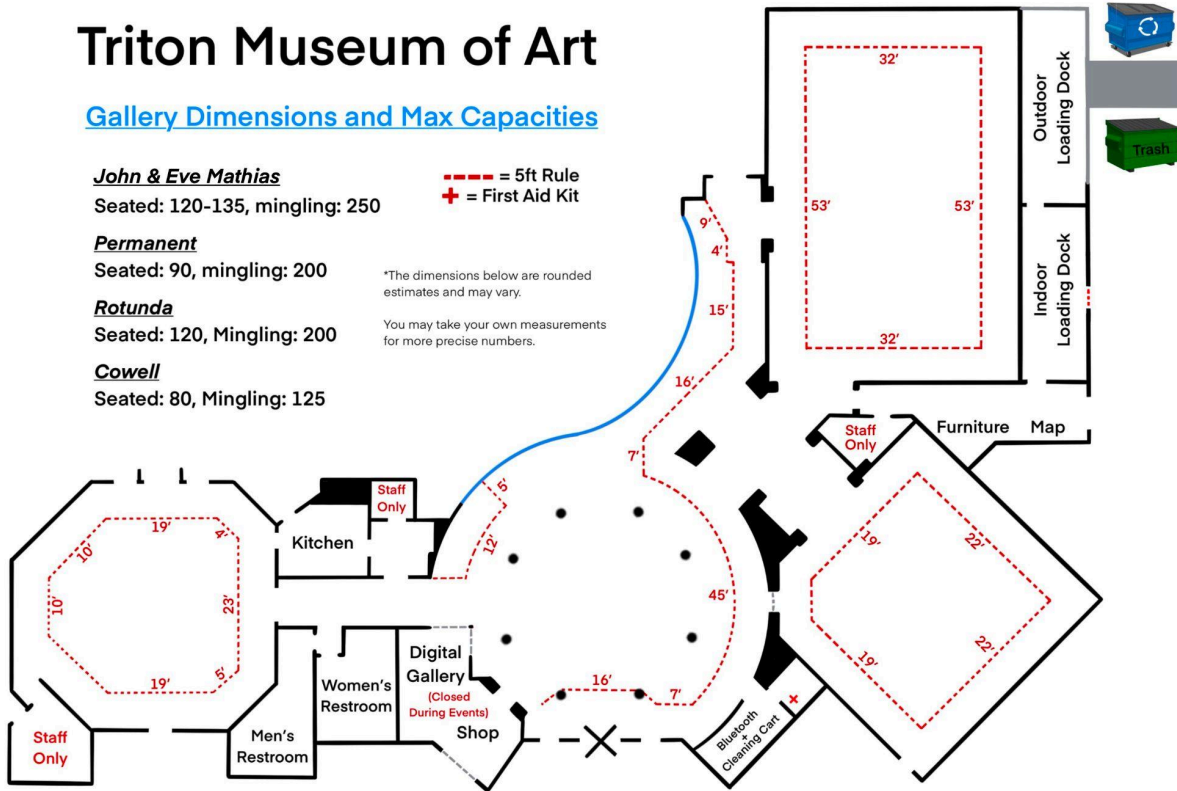
Cowell

Seated: 80, Mingling: 125

--- = 5ft Rule
+ = First Aid Kit

*The dimensions below are rounded estimates and may vary.

You may take your own measurements for more precise numbers.



Emergency

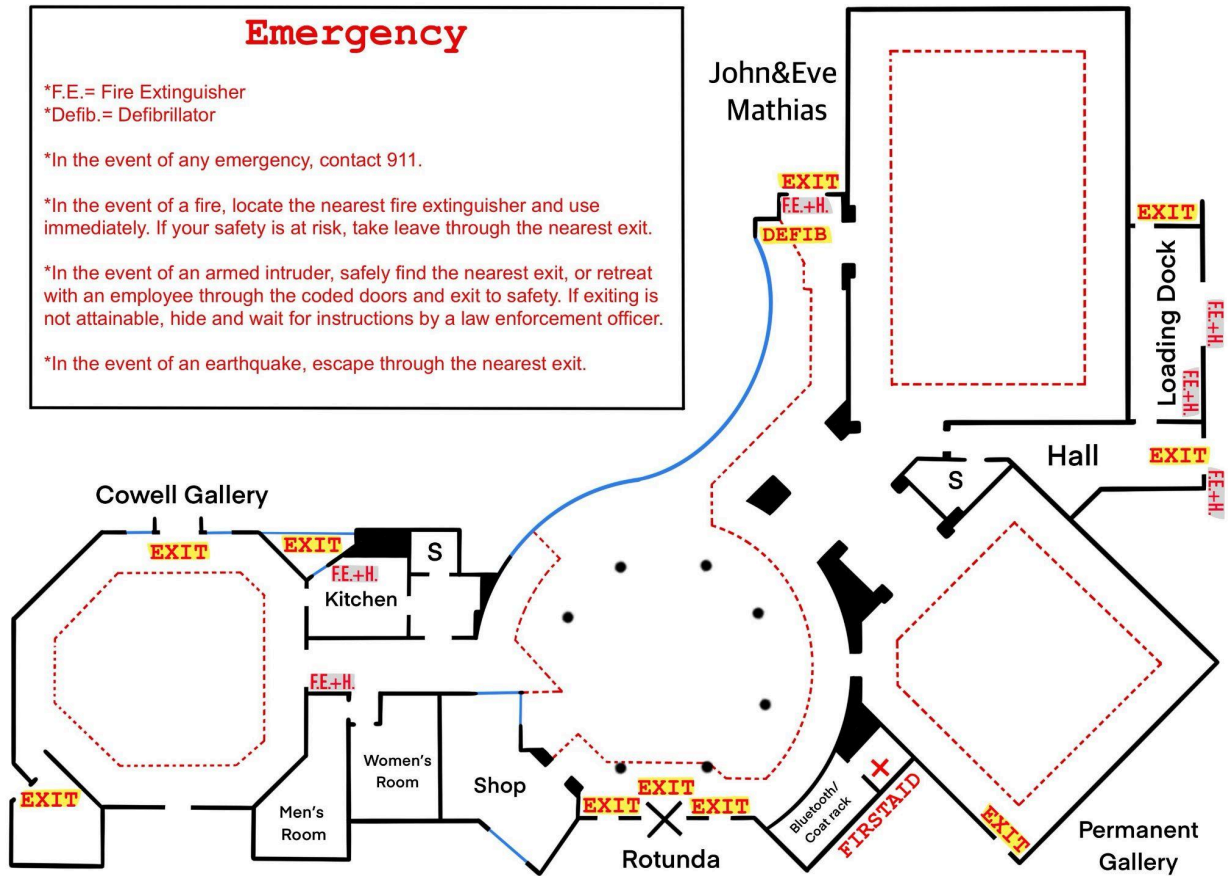
*F.E.= Fire Extinguisher
*Defib.= Defibrillator

*In the event of any emergency, contact 911.

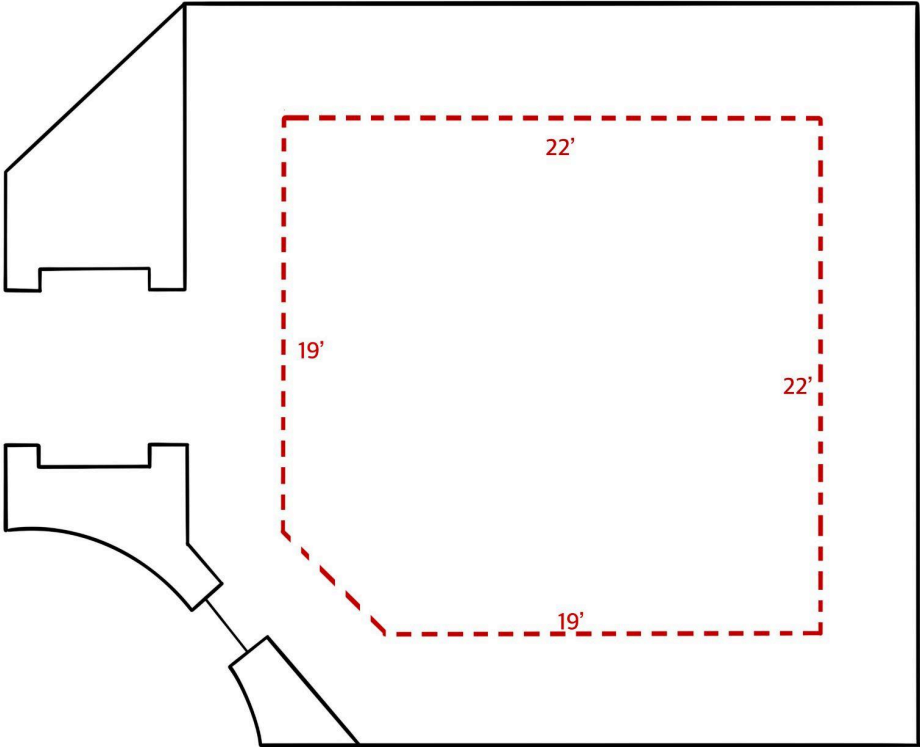
*In the event of a fire, locate the nearest fire extinguisher and use immediately. If your safety is at risk, take leave through the nearest exit.

*In the event of an armed intruder, safely find the nearest exit, or retreat with an employee through the coded doors and exit to safety. If exiting is not attainable, hide and wait for instructions by a law enforcement officer.

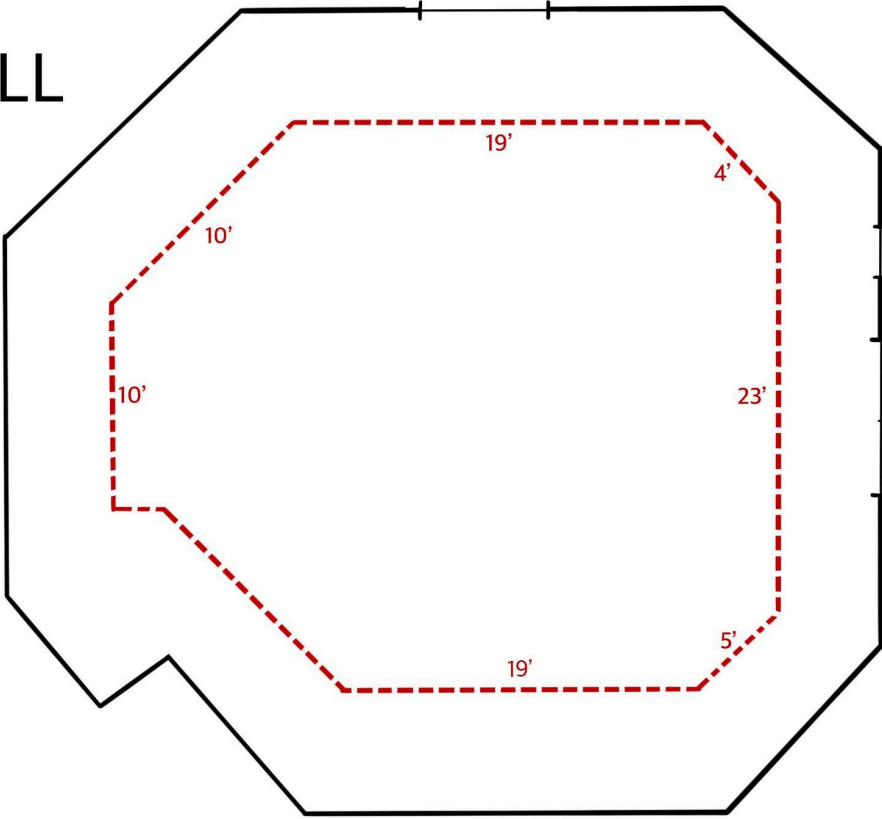
*In the event of an earthquake, escape through the nearest exit.



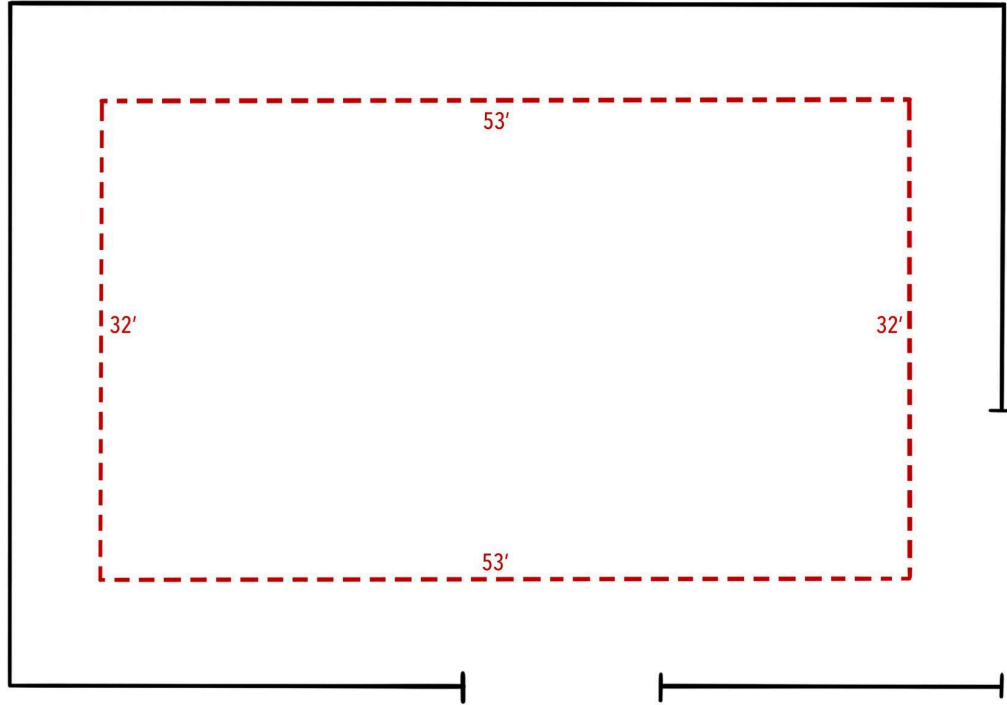
PERMANENT



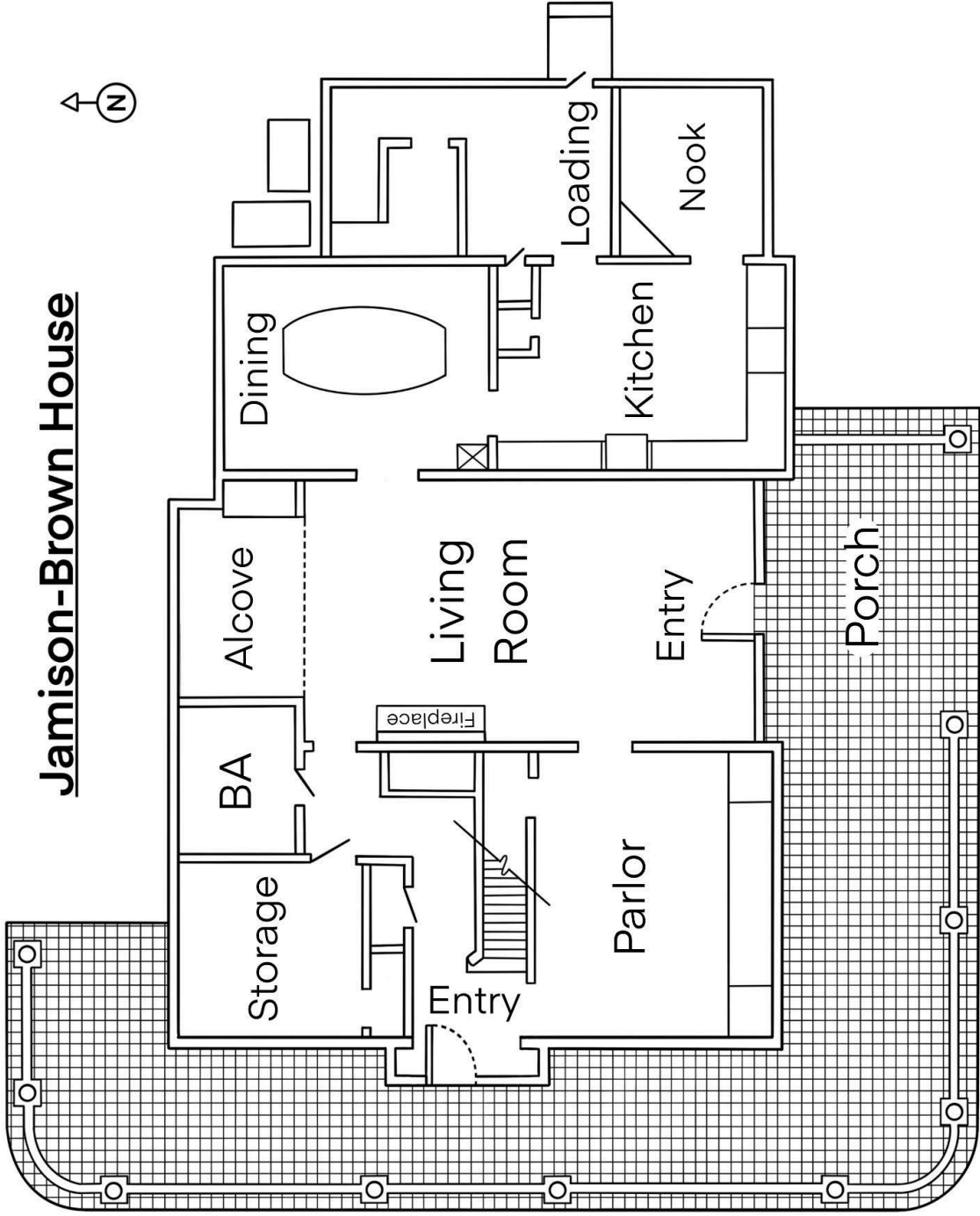
COWELL

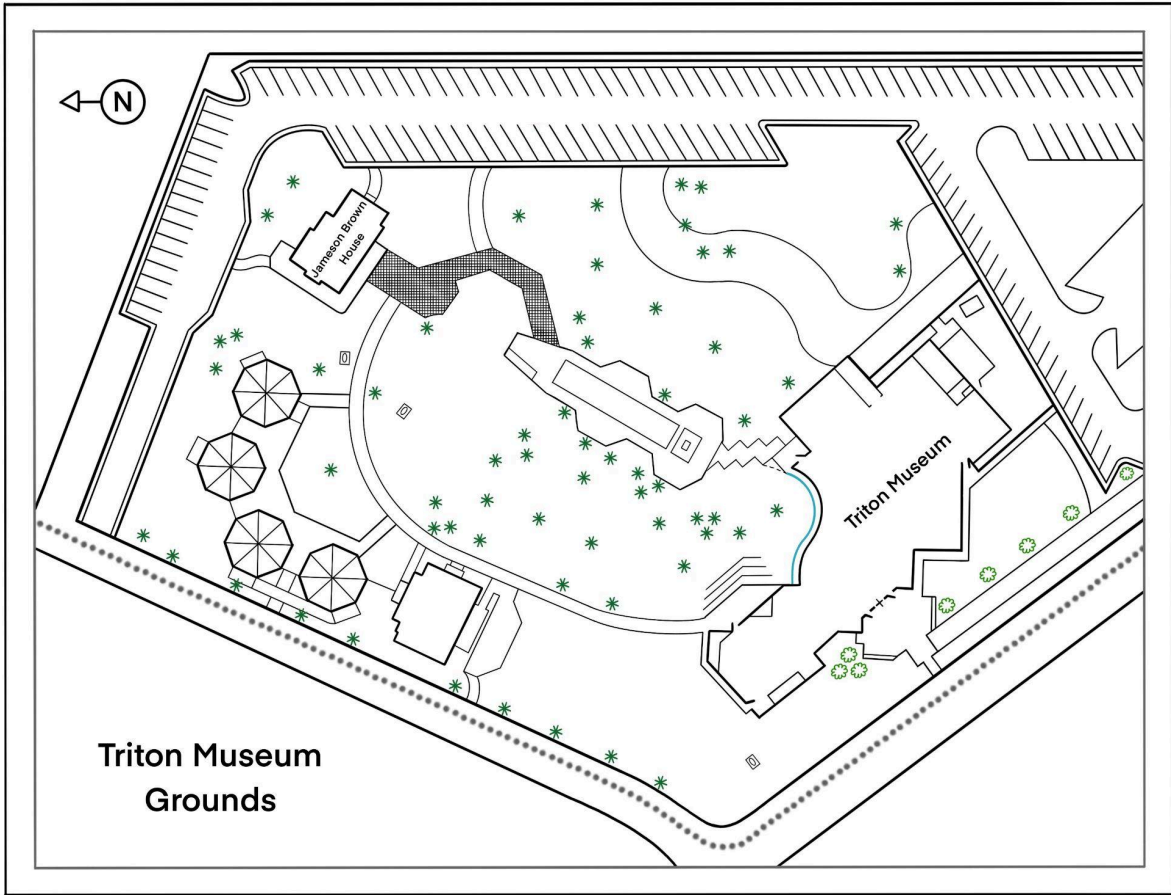


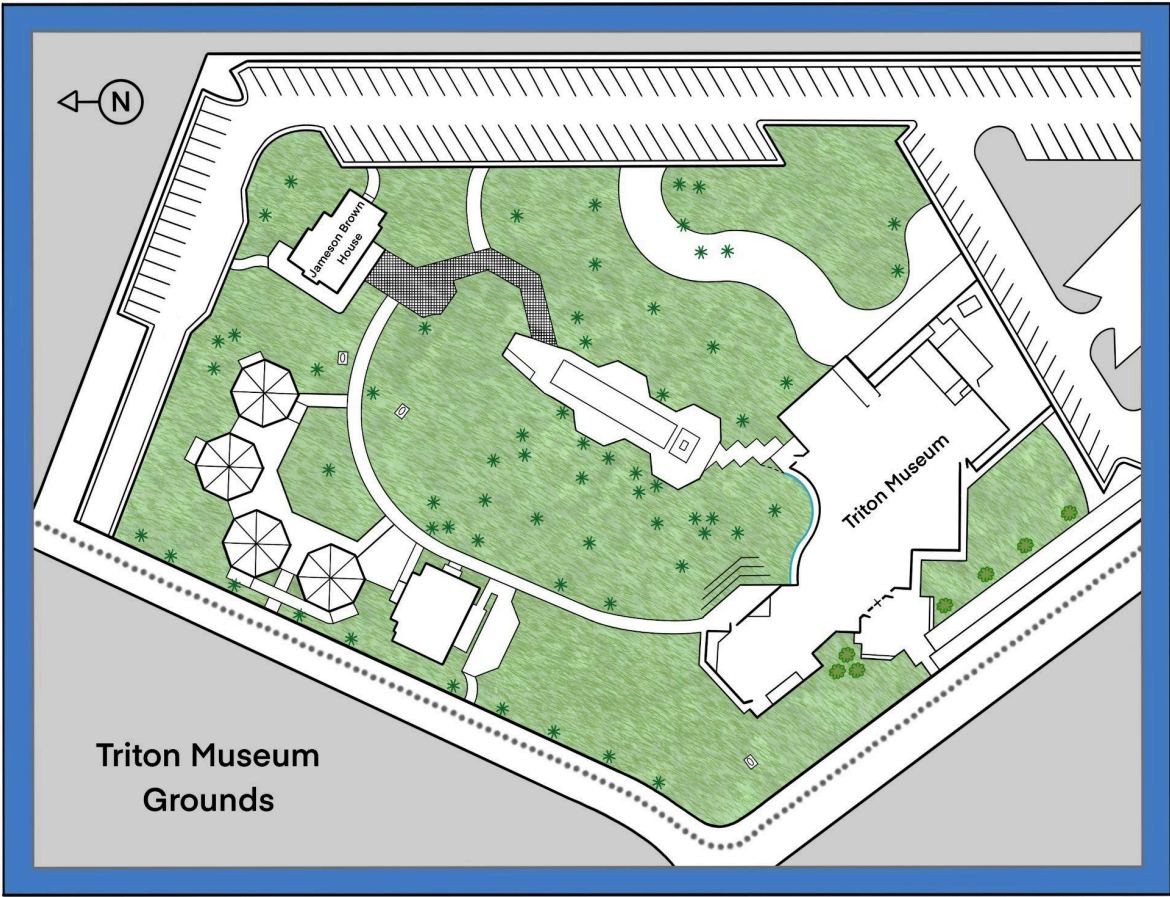
JOHN & EVE MATHIAS



Jamison-Brown House







Triton Museum
Grounds

